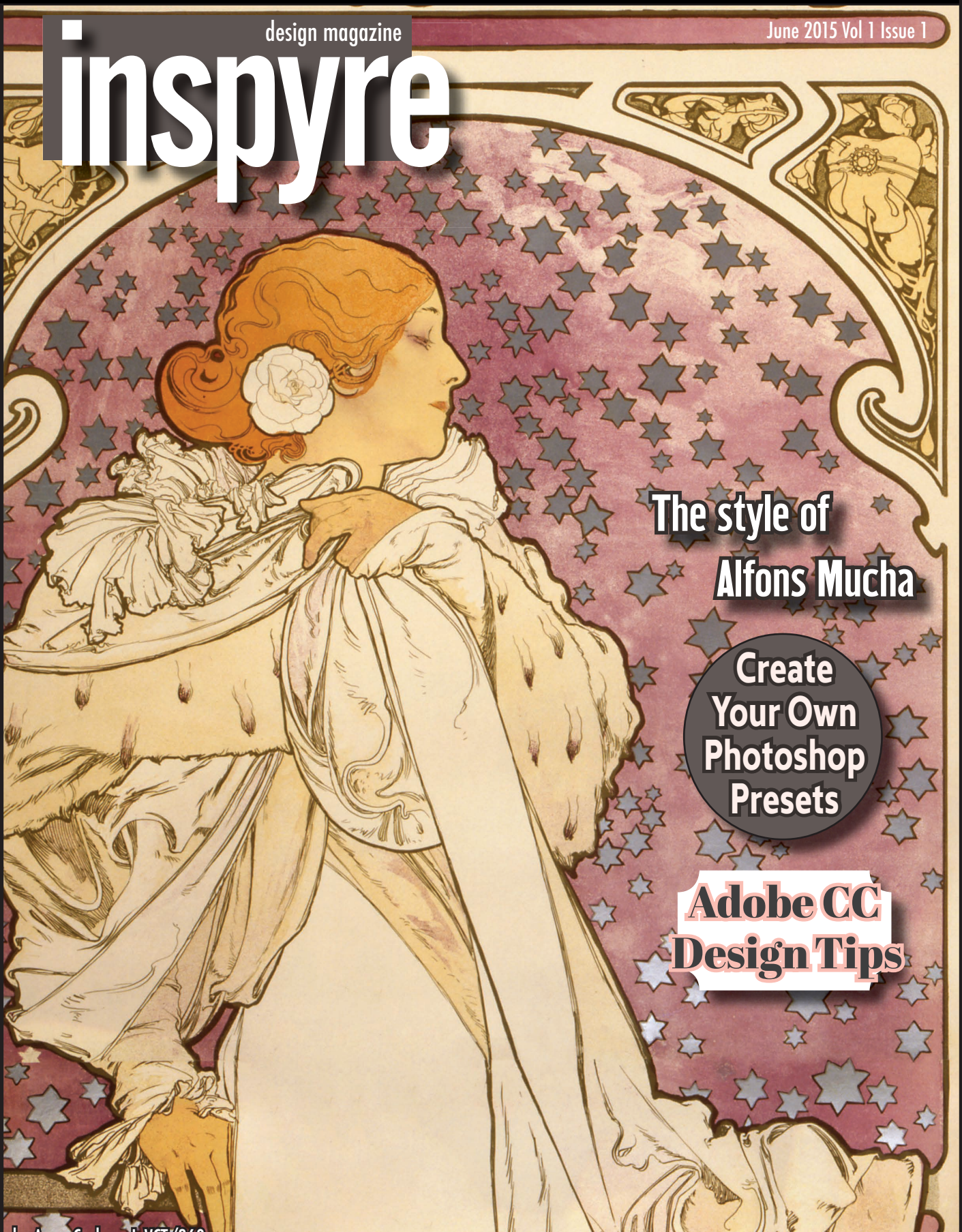


design magazine

June 2015 Vol 1 Issue 1

inspyre



The style of
Alfons Mucha

Create
Your Own
Photoshop
Presets

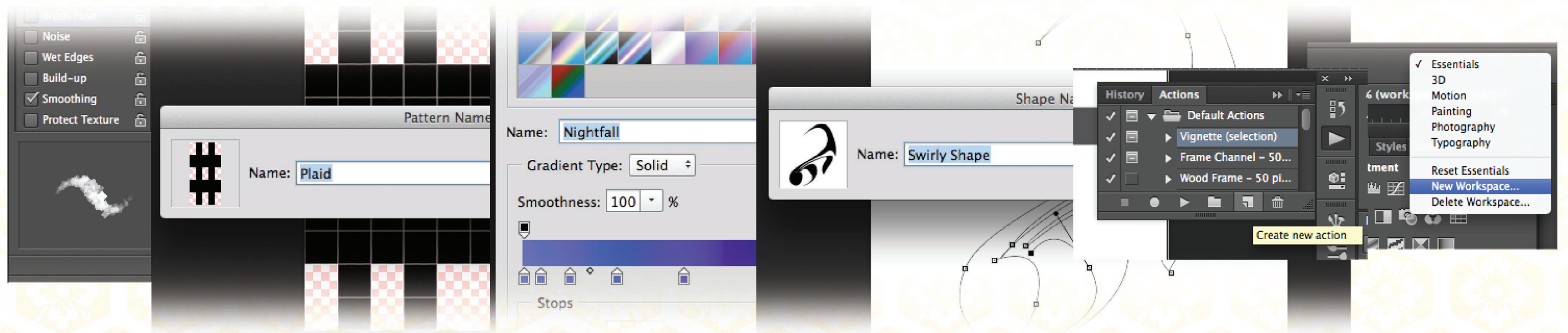
Adobe CC
Design Tips

by Anne Carlsen | VCT/360

Creating Custom Photoshop Presets

Photoshop comes with many useful tools and presets, but what do you do when that just isn't enough? Will you limit your creativity by only using what Adobe has allotted? There is good news, you don't have to! Adobe has provided set of presets, but they have also provided us with the tools and capability to create custom presets to suit our needs.

CUSTOMIZATION	TYPE	DIFFICULTY LEVEL	TUTORIAL
Custom Brush	Effect	Beginner	photoshopesentials.com
Custom Pattern	Effect	Beginner	photoshopesentials.com
Custom Gradient	Effect	Beginner	helpx.adobe.com
Custom Shape	Effect	Intermediate	photoshopesentials.com
Actions	Workflow	Advanced	hongkiat.com
Workspace	Workflow	Beginner	helpx.adobe.com



Brushes can be customized easily. Anything you see on your image can be defined as a brush preset. It is as simple as making a selection, preferably one with good contrast on your graphic and identifying it as a brush. Select *Edit > Define Brush Preset* and Photoshop prompts you to save it as a brush, providing a thumbnail so you can see what it will look like. Making brushes is easy, but making good brushes will take some trial and error.

Patterns can be customized the same way that a brush would. However, a good pattern is repeated seamlessly. Spatial awareness and careful measuring need to be utilized in order for a pattern to look like an endless loop. The trick is to not let the viewer see where the pattern begins and ends. Making more detailed patterns requires a lot of practice. Reading various tutorials, such as the one on PHOTOSHOPESSENTIALS.COM doesn't hurt either.

Gradients are a lot of fun to create. They are only limited by the amount of available colors and your imagination. You can make gradients to suit whatever your project requires. Gradients do not need to be overly noticeable, subdued gradients can add to a mood while staying unobtrusive. The author created background of this article uses a combination of seamless pattern and gradient for a delicate, subtle look.

Shapes take a little more work than the previously mentioned presets. PHOTOSHOPESSENTIALS.COM saves the day yet again with a great tutorial on how to create custom shapes using an image, a pen tool, and a shape layer. Custom shapes are a great addition to any designer's arsenal. This is another case where Photoshop presets are only the tip of the iceberg. When the software falls short, it's the creator's time to shine.

Actions are one of those presets that are not as well known as others, but ought to be used by everyone. An action is something that can be used to record a workflow and replay it. Why is this useful? Because it can be used to record those tedious little tasks and use the script to do them in place of you repeating them over and over again. They take a while to get the hang of, but HONGKIAT.COM offers a great tutorial explaining how to take advantage of them.

Workspaces are another overlooked gem. A workspace is a set of toolbars arranged in a way to suit a type of project. For instance, there is a workspace setup for **Motion** with the group of toolbars most suited to create video and animation. Adobe has given you the workspace function for painless toolbar switching and even to create your own. With all the preset customizations available, you don't have to settle for factory defaults ever again! ☘

The Art of ALFONS MUCHA

Every once in a while there is an artist that is responsible for creations that define an era. Alfons Mucha is an artist that carried the world from the late 1800s to the early 1900s. Works featured here, *La Danse*, *Four Seasons*, *Monaco Monte Carlo* & *Gismonda* are examples of his more memorable creations.





SMITH Systems Consulting

does web development too!
Contact us for your *custom* solution today.